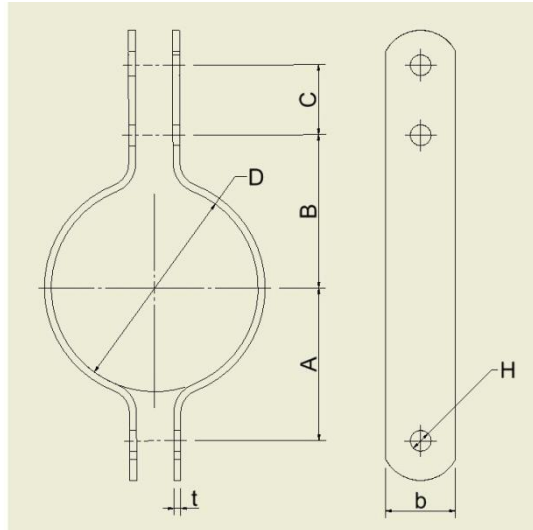




ISO Dimensions

Pipe Clamp AS, is a supplier of standard stainless steel pipe clamps. The fabrication and main office is located in Stavanger.



Standard	Description	Material AISI 316L						
		D (mm)	b (mm)	t (mm)	H (mm)	A (mm)	B (mm)	C (mm)
ISO	10/17,2	20	2	7				M 6 x 20
ISO	15/21,3	20	2	7				M 6 x 20
ISO	20/26,9	20	2	7				M 6 x 20
ISO	25/33,7	20	3	7				M 6 x 25
ISO	32/42,4	30	3	9				M 8 x 25
ISO	40/48,3	30	3	9				M 8 x 25
ISO	50/60,3	38	3	9				M 8 x 25
ISO	65/76,1	38	3	9				M 8 x 30
ISO	80/88,9	38	3	9				M 8 x 30
ISO	100/114,3	38	3	11				M 10 x 30

- The pipe clamps is normally delivered without mounting bolts. However bolts can be delivered on request.
- Send E-mail for our best quotation.

Contact:

post@pipeclamp.no

or

Cell: +47 41514382